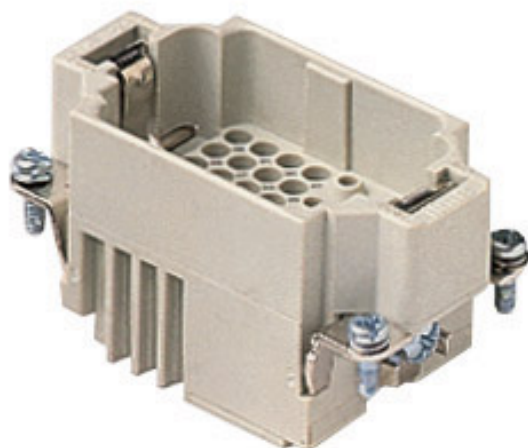






## Product Sheet

**Part Number:** CXM 8/24



<b>Family</b>	CLASS insert series
<b>Version</b>	crimp connections
<b>Series</b>	CX
<b>Product type</b>	for male contacts 16A and 10A
<b>Model</b>	male insert
<b>Reference standard</b>	EN 61984 (2001-11)
<b>No. of poles</b>	8 poles + 
<b>Auxiliaries poles</b>	24 poles (10A max - 250V)
<b>Voltage (V)</b>	400V
<b>Current (A)</b>	16A (A.C./D.C.)
<b>Quality mark</b>	 600V  GOST 
<b>IP degree of protection</b>	IP20 degree of protection without enclosure; IP65, IP66, IP67, IP68 (EN 60529) and IP69K (DIN 40050 - 9) with enclosure
<b>Fixing centre distance</b>	size "57.27"

The information and the dimensions contained are not binding and may be changed without prior notice.  
The drawing's dimensions are in mm.

**Impulse withstand voltage** 4kV

**Pollution degree** 2

**Notes**



CXF/M 8/24 inserts

- characteristics according to EN 61984:

16A 230/400V 4kV 3

16A 400V 4kV 2

10A 160V 2,5kV 3

10A 250V 4kV 2

- rated voltage according to UL/CSA: 600V

- insulation resistance: > 10 GOhm

- ambient temperature limit: -40 °C ... +125 °C

- are made of self-extinguishing thermoplastic resin UL 94 V0

- mechanical life: > 500 cycles

- contact resistance: < 1 mOhm (8 poles) < 3 mOhm (24 poles)

- PCBs interface, see article C1F 2.4 (10A contacts)

- enclosures: size 57.27:

C-TYPE IP65/IP66

C7 IP67 stainless steel lever

V-TYPE IP65/IP66 stainless steel lever

T-TYPE IP65 insulating

JEI zinc-plated steel lever

BIG hoods

aggressive environments

EMC

central lever

IP68

- panel supports: COB

The information and the dimensions contained are not binding and may be changed without prior notice.

The drawing's dimensions are in mm.